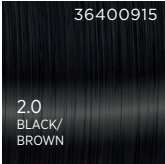
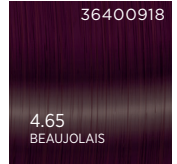
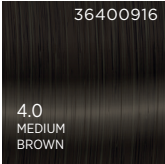
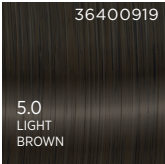
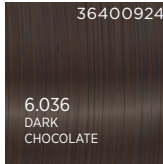
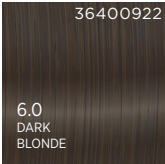
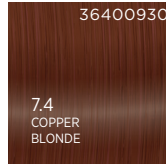
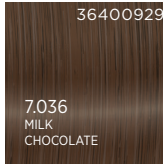
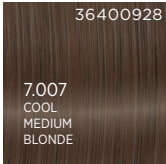
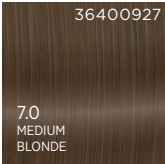
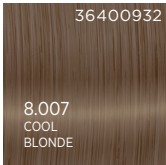
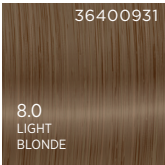


NATURAL

COOL

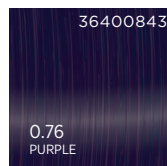
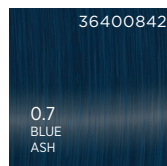
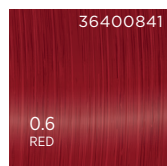
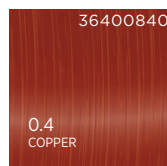
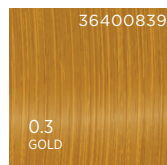
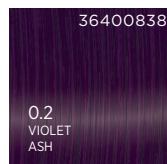
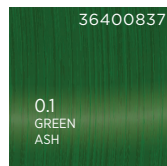
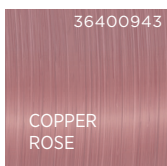
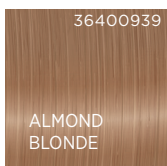
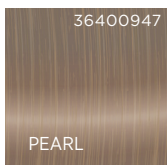
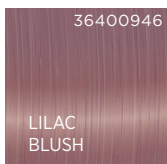
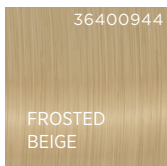
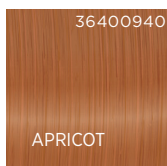
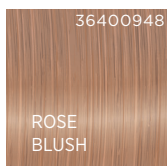
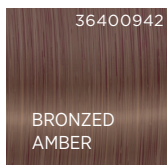
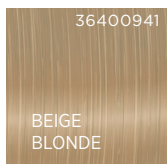
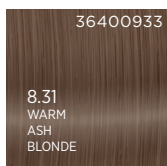
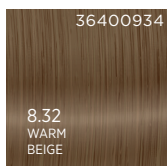
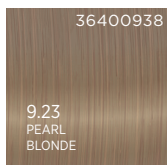
FASHION



BLONDES

TONERS

INFINITI
INTENSIVES



! PureTone Toner MUSS auf aufgehelltem oder natürlichem Blond angewendet werden. Vor der Anwendung shampooonieren und mit Handtuch trocknen.



Visuelle Kontrolle für bis zu 25 Minuten.

000 PURE GLOSS



💡 Zum Verdünnen JEDER PureTone-Farbe verwenden. Siehe Schnellstart Anleitung.

💡 Nur mit Activator mischen, um eine unglaubliche Glanzbehandlung zu erzielen.



💡 Intensivieren oder neutralisieren Sie die Ergebnisse und schaffen individuelle, maßgeschneiderte Farbe. Verwenden Sie INFINITI Intensives mit JEDEM PureTone-Farbtönen.